



Officials: Lisa Jones, Charles Gonzalez, Anita Ortega

Washington St. - 44

Record: 12-11

NO.	Name	Min	FG		3P		FT		Rebounds			Fouls		TP	AS	TO	ST	Blocks		+/-
			M-A	M-A	M-A	M-A	OR	DR	TOT	PF	FD	BS	BA							
15	Ula Motuga	F 30:00	1-7	0-2	2-2	1	3	4	1	1	4	1	4	1	4	1	1	1	1	-16
55	Bella Murekatete	C 18:31	1-4	0-0	0-0	3	7	10	1	1	2	0	2	1	1	1	0	0	-7	
4	Krystal Leger-Walker	G 37:22	4-10	2-8	0-0	1	2	3	1	1	10	3	8	1	0	0	0	0	-16	
5	Charlisse Leger-Walker	G 38:57	2-17	1-4	7-10	1	2	3	2	7	12	2	3	2	1	3	1	3	-16	
21	Johanna Teder	G 30:42	3-9	2-6	1-2	0	3	3	4	2	9	0	4	1	0	1	0	1	-10	
20	Grace Sarver	15:03	1-2	0-1	0-0	0	2	2	1	0	2	1	1	2	0	0	0	0	-12	
3	Emma Nankervis	06:59	1-2	0-0	1-1	0	1	1	0	1	3	0	1	0	0	0	0	0	-5	
13	Shir Levy	05:34	0-0	0-0	0-0	0	0	0	1	0	0	0	0	0	0	0	0	0	-3	
2	Michaela Jones	05:44	0-0	0-0	0-0	2	0	2	0	1	0	0	0	0	0	0	0	0	3	
22	Celena Molina	10:05	1-2	0-0	0-0	1	0	1	0	1	2	0	0	0	0	0	0	0	2	
14	Jessica Clarke	01:03	0-0	0-0	0-0	0	0	0	0	0	0	0	1	0	0	0	0	0	0	
Team									5	2	7			0		2				
Totals			14-53	5-21	11-15	14	22	36	11	15	44	7	26	8	3	5			-16	

Technical Fouls::NONE

Shooting By Period		
1 st FG%	2-10	20.0%
3PT%	0-1	0.0%
FT%	1-2	50%
2 nd FG%	5-9	55.6%
3PT%	2-4	50.0%
FT%	4-6	66.7%
3 rd FG%	1-16	6.3%
3PT%	1-8	12.5%
FT%	2-2	100%
4 th FG%	6-18	33.3%
3PT%	2-8	25.0%
FT%	4-5	80%
GM FG%	14-53	26.4%
3PT%	5-21	23.8%
FT%	11-15	73.3%

Dead Ball Rebounds: 4, 1

Arizona - 60

Record: 16-4

NO.	Name	Min	FG		3P		FT		Rebounds			Fouls		TP	AS	TO	ST	Blocks		+/-
			M-A	M-A	M-A	M-A	OR	DR	TOT	PF	FD	BS	BA							
0	Trinity Baptiste	F 25:59	8-11	1-1	0-0	3	3	6	2	0	17	0	3	6	0	0	0	0	0	16
14	Sam Thomas	F 31:55	2-4	1-2	2-2	0	4	4	2	3	7	1	3	0	0	0	0	0	22	
25	Cate Reese	F 21:28	4-9	0-1	2-2	1	1	2	0	1	10	0	1	2	0	0	0	0	21	
2	Aari McDonald	G 31:00	6-17	1-7	0-0	1	4	5	3	2	13	9	3	3	0	0	0	0	23	
23	Bendu Yeaney	G 19:43	0-3	0-1	0-0	1	2	3	3	1	0	0	0	0	0	1	1	1	19	
13	Helena Pueyo	22:55	0-3	0-2	0-0	0	6	6	1	2	0	0	1	5	1	0	2	0	2	
32	Lauren Ware	15:14	3-6	0-0	0-0	1	0	1	0	1	6	1	1	0	2	1	-1	0	-1	
1	Shaina Pellington	19:10	2-7	0-0	0-2	1	2	3	1	1	4	0	1	0	1	1	-5	0	-5	
11	Mara Mote	02:47	0-0	0-0	0-0	0	0	0	2	0	0	0	0	0	0	0	0	0	-6	
4	Madison Conner	07:04	1-2	1-2	0-0	0	1	1	1	0	3	0	0	0	0	0	0	0	-5	
34	Semaj Smith	00:46	0-0	0-0	0-0	1	0	1	0	0	0	0	0	0	0	0	0	0	-4	
10	Derin Erdogan	01:59	0-0	0-0	0-0	0	0	0	0	0	0	0	1	0	0	0	0	0	-2	
Team									3	1	4			0		2				
Totals			26-62	4-16	4-6	12	24	36	15	11	60	11	16	16	5	3			16	

Technical Fouls::NONE

Shooting By Period		
1 st FG%	6-16	37.5%
3PT%	1-6	16.7%
FT%	0-0	0%
2 nd FG%	6-13	46.2%
3PT%	0-1	0.0%
FT%	4-4	100%
3 rd FG%	6-17	35.3%
3PT%	1-4	25.0%
FT%	0-2	0%
4 th FG%	8-16	50.0%
3PT%	2-5	40.0%
FT%	0-0	0%
GM FG%	26-62	41.9%
3PT%	4-16	25.0%
FT%	4-6	66.7%

Dead Ball Rebounds: 3, 1

	WSU	ARIZ
Biggest lead	0 (1 st 10:00)	20 (4 th 6:04)
Best Scoring Run	6(4 th 3:23)	11(1 st 5:43)
Lead Changes	0	
Times Tied	0	
Time with Lead	00:00	38:54

	WSU	ARIZ
Points from	15	23
Turnovers	12	40
Paint	8	8
Second Chance	7	17
Fast Breaks	7	13
Bench	7	13

	Period by Period Scoring				
	1st	2nd	3rd	4th	TOT
WSU	5	16	5	18	44
ARIZ	13	16	13	18	60



Period 1

Quarter Starters:

ARIZ	0 Baptiste T	2 McDonald A	14 Thomas S	23 Yeaney B	25 Reese C
WSU	4 Leger-Walker K	5 Leger-Walker C	15 Motuga U	21 Teder J	55 Murekatete B

Game Time	ARIZ	Score	Diff	WSU
10:00	25 REESE C jumpball lost			55 MUREKATETE B jumpball won
09:40	0 BAPTISTE T steal (1)			21 TEDER J turnover bad pass (1)
09:13	25 REESE C 3pt FG from turnover, jump shot missed			
09:10				55 MUREKATETE B defensive rebound (1)
09:02	0 BAPTISTE T steal (2)			4 LEGER-WALKER K turnover lost ball (1)
08:54	0 BAPTISTE T 2pt FG fast break from turnover in the paint, layup made (2)	2-0	2	
08:54	2 MCDONALD A assist (1)			
08:39	0 BAPTISTE T steal (3)			15 MOTUGA U turnover lost ball (1)
08:31	0 BAPTISTE T 3pt FG fast break from turnover, jump shot made (5)	5-0	5	
08:31	2 MCDONALD A assist (2)			
08:11				5 LEGER-WALKER C 2pt FG in the paint, pull up jump shot missed
08:08	0 BAPTISTE T defensive rebound (1)			
08:04	2 MCDONALD A 2pt FG outside the paint, pull up jump shot missed			
08:01				15 MOTUGA U defensive rebound (1)
07:40	2 MCDONALD A steal (1)			4 LEGER-WALKER K turnover bad pass (2)
07:35	25 REESE C 2pt FG fast break from turnover in the paint, layup made (2)	7-0	7	
07:35	2 MCDONALD A assist (3)			
07:19				55 MUREKATETE B turnover travel (1)
07:00	2 MCDONALD A foul drawn (1)			21 TEDER J foul personal (1 - 1)
06:51	2 MCDONALD A 3pt FG from turnover, jump shot missed			
06:47	0 BAPTISTE T offensive rebound (2)			
06:45	0 BAPTISTE T 2pt FG from turnover second chance in the paint, layup made (7)	9-0	9	
06:34				21 TEDER J turnover travel (2)
06:15	2 MCDONALD A 3pt FG from turnover, jump shot missed			
06:12				21 TEDER J defensive rebound (1)
06:04				15 MOTUGA U 2pt FG in the paint, layup missed
06:02				55 MUREKATETE B offensive rebound (2)
06:00				21 TEDER J 3pt FG second chance, jump shot missed
05:57	0 BAPTISTE T defensive rebound (3)			
05:43	2 MCDONALD A 2pt FG in the paint, turnaround jump shot made (2)	11-0	11	
05:21	2 MCDONALD A foul shooting (1 - 1)			5 LEGER-WALKER C foul drawn (1)
05:21	23 YEANEY B substitution out			
05:21	25 REESE C substitution out			
05:21	13 PUEYO H substitution in			
05:21	32 WARE L substitution in			
05:21		11-1	10	5 LEGER-WALKER C free throw 1 - 2 made (1)
05:21				5 LEGER-WALKER C free throw 2 - 2 missed
05:20				offensive dead ball rebound (1)



Washington St. at Arizona

03/04/21 Michelob Ultra Arena, Las Vegas, NV
2021 Pac-12 Women's Tournament

Officials: Lisa Jones, Charles Gonzalez, Anita Ortega

Game Time	ARIZ	Score	Diff	WSU
05:16				4 LEGER-WALKER K turnover bad pass (3)
04:46	2 MCDONALD A 3pt FG from turnover, jump shot missed			
04:42				55 MUREKATETE B defensive rebound (3)
04:28				5 LEGER-WALKER C 2pt FG in the paint, jump shot missed
04:28	defensive dead ball rebound (1)			
04:28	Timeout media			
04:28	0 BAPTISTE T substitution out			
04:28	14 THOMAS S substitution out			
04:28	23 YEANEY B substitution in			
04:28	25 REESE C substitution in			
04:14	32 WARE L 2pt FG in the paint, layup blocked			
04:14				55 MUREKATETE B block (1)
04:09				15 MOTUGA U defensive rebound (2)
03:56				15 MOTUGA U 2pt FG in the paint, layup blocked
03:56	32 WARE L block (1)			
03:56				offensive dead ball rebound (2)
03:47	2 MCDONALD A substitution out			
03:47	23 YEANEY B substitution out			
03:47	1 PELLINGTON S substitution in			
03:47	14 THOMAS S substitution in			
03:39				turnover shot clock (8)
03:28	14 THOMAS S 2pt FG from turnover outside the paint, pull up jump shot made (2)	13-1	12	
03:02	25 REESE C substitution out			
03:02	11 MOTE M substitution in			
02:55				turnover shot clock (9)
02:42	13 PUEYO H 3pt FG from turnover, jump shot missed			
02:39				15 MOTUGA U defensive rebound (3)
02:26				15 MOTUGA U 2pt FG in the paint, layup missed
02:22	14 THOMAS S defensive rebound (1)			
02:08	1 PELLINGTON S turnover dribbling violation (1)			
02:01	11 MOTE M foul personal (1 - 2)			5 LEGER-WALKER C foul drawn (2)
02:00		13-3	10	4 LEGER-WALKER K 2pt FG from turnover in the paint, driving layup made (2)
01:43	13 PUEYO H 2pt FG in the paint, layup missed			
01:38				4 LEGER-WALKER K defensive rebound (1)
01:34				4 LEGER-WALKER K turnover (4)
01:34	1 PELLINGTON S substitution out			
01:34	11 MOTE M substitution out			
01:34	32 WARE L substitution out			
01:34	0 BAPTISTE T substitution in			
01:34	2 MCDONALD A substitution in			
01:34	25 REESE C substitution in			
01:13	2 MCDONALD A 2pt FG from turnover in the paint, driving layup missed			
01:10				55 MUREKATETE B defensive rebound (4)
01:04	25 REESE C steal (1)			15 MOTUGA U turnover lost ball (2)
01:00	2 MCDONALD A foul drawn (2)			21 TEDER J foul personal (2 - 2)
00:50	25 REESE C 2pt FG from turnover outside the paint, turnaround jump shot missed			



Official Basketball Play by Play - 1st Period

Washington St. at Arizona

03/04/21 Michelob Ultra Arena, Las Vegas, NV
2021 Pac-12 Women's Tournament

Game Time: 3:00 PM

Game Duration: 2:05

Attendance: 41

Officials: Lisa Jones, Charles Gonzalez, Anita Ortega

Game Time	ARIZ	Score	Diff	WSU
00:46				55 MUREKATETE B defensive rebound (5)
00:33				5 LEGER-WALKER C 2pt FG in the paint, pull up jump shot missed
00:28				55 MUREKATETE B offensive rebound (6)
00:27		13-5	8	55 MUREKATETE B 2pt FG second chance in the paint, layup made (2)
00:14	25 REESE C turnover bad pass (1)			5 LEGER-WALKER C steal (1)
00:07				5 LEGER-WALKER C 2pt FG from turnover in the paint, driving layup blocked
00:07	13 PUEYO H block (1)			
00:07				offensive rebound (12)
00:07				21 TEDER J substitution out
00:07				20 SARVER G substitution in
END OF PERIOD				
ARIZ 13-5 WSU				



Officials: Lisa Jones, Charles Gonzalez, Anita Ortega

Washington St. - 5

NO.	Name	Min	FG			Rebounds			Fouls		TP	AS	TO	ST	Blocks		+/-
			M-A	3P	FT	OR	DR	TOT	PF	FD					BS	BA	
15	Ula Motuga	F 10:00	0-3	0-0	0-0	0	3	3	0	0	0	0	2	0	0	1	-8
55	Bella Murekatete	C 10:00	1-1	0-0	0-0	2	4	6	0	0	2	0	1	0	1	0	-8
4	Krystal Leger-Walker	G 10:00	1-1	0-0	0-0	0	1	1	0	0	2	0	4	0	0	0	-8
5	Charlisse Leger-Walker	G 10:00	0-4	0-0	1-2	0	0	0	0	2	1	0	0	1	0	1	-8
21	Johanna Teder	G 09:52	0-1	0-1	0-0	0	1	1	2	0	0	0	2	0	0	0	-8
20	Grace Sarver	00:08	0-0	0-0	0-0	0	0	0	0	0	0	0	0	0	0	0	
Team						1	0	1			0	2					
Totals			2-10	0-1	1-2	3	9	12	2	2	5	0	11	1	1	2	-8

Shooting By Period		
1st FG%	2-10	20.0%
3PT%	0-1	0.0%
FT%	1-2	50%
GM FG%	2-10	20.0%
3PT%	0-1	0.0%
FT%	1-2	50.0%

Dead Ball Rebounds: 2, 0

Technical Fouls::NONE

Arizona - 13

NO.	Name	Min	FG			Rebounds			Fouls		TP	AS	TO	ST	Blocks		+/-
			M-A	3P	FT	OR	DR	TOT	PF	FD					BS	BA	
0	Trinity Baptiste	F 07:06	3-3	1-1	0-0	1	2	3	0	0	7	0	0	3	0	0	8
14	Sam Thomas	F 09:19	1-1	0-0	0-0	0	1	1	0	0	2	0	0	0	0	0	8
25	Cate Reese	F 07:39	1-3	0-1	0-0	0	0	0	0	0	2	0	1	1	0	0	11
2	Aari McDonald	G 07:47	1-6	0-3	0-0	0	0	0	1	2	2	3	0	1	0	0	8
23	Bendu Yeane	G 05:20	0-0	0-0	0-0	0	0	0	0	0	0	0	0	0	0	0	11
13	Helena Pueyo	05:21	0-2	0-1	0-0	0	0	0	0	0	0	0	0	0	1	0	-3
32	Lauren Ware	03:47	0-1	0-0	0-0	0	0	0	0	0	0	0	0	0	1	1	-1
1	Shaina Pellington	02:13	0-0	0-0	0-0	0	0	0	0	0	0	0	1	0	0	0	0
11	Mara Mote	01:28	0-0	0-0	0-0	0	0	0	1	0	0	0	0	0	0	0	-2
Team						0	0	0			0	0					
Totals			6-16	1-6	0-0	1	3	4	2	2	13	3	2	5	2	1	8

Shooting By Period		
1st FG%	6-16	37.5%
3PT%	1-6	16.7%
FT%	0-0	0%
GM FG%	6-16	37.5%
3PT%	1-6	16.7%
FT%	0-0	0.0%

Dead Ball Rebounds: 0, 1

Technical Fouls::NONE

	WSU	ARIZ
Biggest lead	0 (1st 10:00)	12 (1st 3:28)
Best Scoring Run	4 (1st 0:27)	11 (1st 5:43)
Lead Changes	0	
Times Tied	0	
Time with Lead	00:00	08:54

	WSU	ARIZ
Points from		
Turnovers	2	11
Paint	4	8
Second Chance	2	2
Fast Breaks	0	7
Bench	0	0

	Period by Period Scoring				
	1st	2nd	3rd	4th	TOT
WSU	5	16	5	18	44
ARIZ	13	16	13	18	60



Period 2

Quarter Starters:

ARIZ	0 Baptiste T	2 McDonald A	13 Pueyo H	14 Thomas S	25 Reese C
WSU	4 Leger-Walker K	5 Leger-Walker C	15 Motuga U	20 Sarver G	55 Murekatete B

Game Time	ARIZ	Score	Diff	WSU
09:44	0 BAPTISTE T 2pt FG in the paint, layup made (9)	15-5	10	
09:44	2 MCDONALD A assist (4)			
09:23	0 BAPTISTE T steal (4)			5 LEGER-WALKER C turnover bad pass (1)
09:18	14 THOMAS S foul drawn (1)			5 LEGER-WALKER C foul shooting (1 - 1)
09:18				55 MUREKATETE B substitution out
09:18				3 NANKERVIS E substitution in
09:18	14 THOMAS S free throw fast break 1 - 2 made (3)	16-5	11	
09:18	14 THOMAS S free throw fast break 2 - 2 made (4)	17-5	12	
09:17	13 PUEYO H steal (1)			15 MOTUGA U turnover bad pass (3)
09:01	25 REESE C 2pt FG from turnover in the paint, layup made (4)	19-5	14	
09:01	2 MCDONALD A assist (5)			
08:57				Timeout 30 Sec
08:57	Timeout media			
08:57	14 THOMAS S substitution out			
08:57	23 YEANEY B substitution in			
08:32				15 MOTUGA U 3pt FG , jump shot missed
08:28	13 PUEYO H defensive rebound (1)			
08:19	0 BAPTISTE T turnover 3 seconds (1)			
08:04	13 PUEYO H steal (2)			20 SARVER G turnover lost ball (1)
07:59	13 PUEYO H turnover bad pass (1)			4 LEGER-WALKER K steal (1)
07:52		19-7	12	5 LEGER-WALKER C 2pt FG fast break from turnover in the paint, driving layup made (3)
07:52	23 YEANEY B foul shooting (1 - 1)			5 LEGER-WALKER C foul drawn (3)
07:52				5 LEGER-WALKER C free throw fast break 1 - 1 missed
07:51	2 MCDONALD A defensive rebound (1)			
07:29	25 REESE C 2pt FG in the paint, driving layup missed			
07:25	25 REESE C offensive rebound (1)			
07:18	23 YEANEY B 3pt FG second chance, jump shot missed			
07:16				defensive dead ball rebound (3)
07:16				20 SARVER G substitution out
07:16				13 LEVY S substitution in
07:01				3 NANKERVIS E 2pt FG outside the paint, jump shot missed
06:57	2 MCDONALD A defensive rebound (2)			
06:37	2 MCDONALD A turnover lost ball (1)			15 MOTUGA U steal (1)
06:30				4 LEGER-WALKER K 3pt FG from turnover, jump shot missed
06:26	13 PUEYO H defensive rebound (2)			
06:11	13 PUEYO H foul drawn (1)			13 LEVY S foul personal (1 - 2)
06:11	13 PUEYO H substitution out			
06:11	14 THOMAS S substitution in			
06:04	25 REESE C foul drawn (1)			4 LEGER-WALKER K foul shooting (1 - 3)
06:04	25 REESE C free throw 1 - 2 made (5)	20-7	13	
06:04	25 REESE C free throw 2 - 2 made (6)	21-7	14	
05:51	25 REESE C steal (2)			5 LEGER-WALKER C turnover bad pass (2)



Washington St. at Arizona

03/04/21 Michelob Ultra Arena, Las Vegas, NV
2021 Pac-12 Women's Tournament

Officials: Lisa Jones, Charles Gonzalez, Anita Ortega

Game Time	ARIZ	Score	Diff	WSU
05:47	23 YEANEY B 2pt FG from turnover in the paint, layup missed			
05:43				3 NANKERVIS E defensive rebound (1)
05:36	2 MCDONALD A steal (2)			3 NANKERVIS E turnover lost ball (1)
05:31	23 YEANEY B 2pt FG from turnover in the paint, layup blocked			
05:31				5 LEGER-WALKER C block (1)
05:27				5 LEGER-WALKER C defensive rebound (1)
05:07		21-9	12	3 NANKERVIS E 2pt FG in the paint, layup made (2)
05:07				4 LEGER-WALKER K assist (1)
05:07	23 YEANEY B foul shooting (2 - 2)			3 NANKERVIS E foul drawn (1)
05:07	23 YEANEY B substitution out			
05:07	13 PUEYO H substitution in			
05:07		21-10	11	3 NANKERVIS E free throw 1 - 1 made (3)
04:40	2 MCDONALD A 2pt FG in the paint, jump shot made (4)	23-10	13	
04:15	2 MCDONALD A substitution out			
04:15	1 PELLINGTON S substitution in			
04:15				3 NANKERVIS E substitution out
04:15				13 LEVY S substitution out
04:15				21 TEDER J substitution in
04:15				55 MUREKATETE B substitution in
04:11		23-13	10	5 LEGER-WALKER C 3pt FG , jump shot made (6)
04:11				15 MOTUGA U assist (1)
03:44	25 REESE C 2pt FG in the paint, step back jump shot missed			
03:39				55 MUREKATETE B defensive rebound (7)
03:32				15 MOTUGA U 2pt FG in the paint, layup missed
03:29				15 MOTUGA U offensive rebound (4)
03:29	13 PUEYO H foul shooting (1 - 3)			15 MOTUGA U foul drawn (1)
03:29	25 REESE C substitution out			
03:29	32 WARE L substitution in			
03:29		23-14	9	15 MOTUGA U free throw 1 - 2 made (1)
03:29		23-15	8	15 MOTUGA U free throw 2 - 2 made (2)
03:14	0 BAPTISTE T 2pt FG outside the paint, step back jump shot made (11)	25-15	10	
03:00		25-17	8	15 MOTUGA U 2pt FG outside the paint, jump shot made (4)
02:47	1 PELLINGTON S 2pt FG in the paint, layup blocked			
02:47				15 MOTUGA U block (1)
02:41				5 LEGER-WALKER C defensive rebound (2)
02:38				55 MUREKATETE B turnover travel (2)
02:38	13 PUEYO H substitution out			
02:38	2 MCDONALD A substitution in			
02:18	1 PELLINGTON S 2pt FG from turnover in the paint, driving layup made (2)	27-17	10	
01:55	14 THOMAS S foul shooting (1 - 4)			21 TEDER J foul drawn (1)
01:55				21 TEDER J free throw 1 - 2 missed
01:55				offensive dead ball rebound (4)
01:55		27-18	9	21 TEDER J free throw 2 - 2 made (1)
01:44	0 BAPTISTE T 2pt FG outside the paint, jump shot missed			
01:39				55 MUREKATETE B defensive rebound (8)
01:24				21 TEDER J turnover lost ball (3)
01:02	2 MCDONALD A turnover travel (2)			
01:02				21 TEDER J substitution out



Official Basketball Play by Play - 2nd Period

Washington St. at Arizona

03/04/21 Michelob Ultra Arena, Las Vegas, NV
2021 Pac-12 Women's Tournament

Game Time: 3:00 PM

Game Duration: 2:05

Attendance: 41

Officials: Lisa Jones, Charles Gonzalez, Anita Ortega

Game Time	ARIZ	Score	Diff	WSU
01:02				2 JONES M substitution in
00:48	0 BAPTISTE T steal (5)			4 LEGER-WALKER K turnover bad pass (5)
00:42	0 BAPTISTE T 2pt FG fast break from turnover in the paint, driving layup made (13)	29-18	11	
00:31				15 MOTUGA U turnover travel (4)
00:09	14 THOMAS S turnover lost ball (1)			
00:01		29-21	8	4 LEGER-WALKER K 3pt FG fast break from turnover, jump shot made (5)
END OF PERIOD				
ARIZ 29-21 WSU				



Officials: Lisa Jones, Charles Gonzalez, Anita Ortega

Washington St. - 16

NO.	Name	Min	FG			Rebounds			Fouls		TP	AS	TO	ST	Blocks		+/-
			M-A	M-A	M-A	OR	DR	TOT	PF	FD					BS	BA	
15	Ula Motuga	F 10:00	1-3	0-1	2-2	1	0	1	0	1	4	1	2	1	1	0	0
55	Bella Murekatete	C 04:57	0-0	0-0	0-0	0	2	2	0	0	0	0	1	0	0	0	3
4	Krystal Leger-Walker	G 10:00	1-2	1-2	0-0	0	0	0	1	0	3	1	1	1	0	0	0
5	Charlissee Leger-Walker	G 10:00	2-2	1-1	0-1	0	2	2	1	1	5	0	2	0	1	0	0
21	Johanna Teder	G 03:13	0-0	0-0	1-2	0	0	0	0	1	1	0	1	0	0	0	4
20	Grace Sarver	02:44	0-0	0-0	0-0	0	0	0	0	0	0	0	1	0	0	0	-4
3	Emma Nankervis	05:03	1-2	0-0	1-1	0	1	1	0	1	3	0	1	0	0	0	-3
13	Shir Levy	03:01	0-0	0-0	0-0	0	0	0	1	0	0	0	0	0	0	0	-1
2	Michaela Jones	01:02	0-0	0-0	0-0	0	0	0	0	0	0	0	0	0	0	0	1
Team						0	0	0			0		0				
Totals			5-9	2-4	4-6	1	5	6	3	4	16	2	9	2	2	0	0

Shooting By Period		
2 nd FG%	5-9	55.6%
3PT%	2-4	50.0%
FT%	4-6	66.7%
GM FG%	5-9	55.6%
3PT%	2-4	50.0%
FT%	4-6	66.7%

Dead Ball Rebounds: 1, 1

Technical Fouls::NONE

Arizona - 16

NO.	Name	Min	FG			Rebounds			Fouls		TP	AS	TO	ST	Blocks		+/-
			M-A	M-A	M-A	OR	DR	TOT	PF	FD					BS	BA	
0	Trinity Baptiste	F 10:00	3-4	0-0	0-0	0	0	0	0	0	6	0	1	2	0	0	0
14	Sam Thomas	F 07:14	0-0	0-0	2-2	0	0	0	1	1	2	0	1	0	0	0	2
25	Cate Reese	F 06:31	1-3	0-0	2-2	1	0	1	0	1	4	0	0	1	0	0	2
2	Aari McDonald	G 08:23	1-1	0-0	0-0	0	2	2	0	0	2	2	2	1	0	0	5
23	Bendu Yeane	G 03:50	0-3	0-1	0-0	0	0	0	2	0	0	0	0	0	0	1	-2
13	Helena Pueyo	06:18	0-0	0-0	0-0	0	2	2	1	1	0	0	1	2	0	0	0
1	Shaina Pellington	04:15	1-2	0-0	0-0	0	0	0	0	0	2	0	0	0	0	1	-5
32	Lauren Ware	03:29	0-0	0-0	0-0	0	0	0	0	0	0	0	0	0	0	0	-2
Team						0	0	0			0		0				
Totals			6-13	0-1	4-4	1	4	5	4	3	16	2	5	6	0	2	0

Shooting By Period		
2 nd FG%	6-13	46.2%
3PT%	0-1	0.0%
FT%	4-4	100%
GM FG%	6-13	46.2%
3PT%	0-1	0.0%
FT%	4-4	100.0%

Dead Ball Rebounds: 0, 0

Technical Fouls::NONE

	WSU	ARIZ
Biggest lead	0 (1 st 10:00)	14 (2 nd 9:01)
Best Scoring Run	5(2 nd 3:29)	6(2 nd 9:01)
Lead Changes	0	
Times Tied	0	
Time with Lead	00:00	09:44

Points from	WSU	ARIZ
Turnovers	5	8
Paint	4	10
Second Chance	2	0
Fast Breaks	5	4
Bench	3	2

	Period by Period Scoring				
	1st	2nd	3rd	4th	TOT
WSU	5	16	5	18	44
ARIZ	13	16	13	18	60



Officials: Lisa Jones, Charles Gonzalez, Anita Ortega

Washington St. - 21

NO.	Name	F/C	Min	FG			Rebounds			Fouls		TP	AS	TO	ST	Blocks		+/-
				M-A	M-A	M-A	OR	DR	TOT	PF	FD					BS	BA	
15	Ula Motuga	F	20:00	1-6	0-1	2-2	1	3	4	0	1	4	1	4	1	1	1	-8
55	Bella Murekatete	C	14:57	1-1	0-0	0-0	2	6	8	0	0	2	0	2	0	1	0	-5
4	Krystal Leger-Walker	G	20:00	2-3	1-2	0-0	0	1	1	1	0	5	1	5	1	0	0	-8
5	Charlisse Leger-Walker	G	20:00	2-6	1-1	1-3	0	2	2	1	3	6	0	2	1	1	1	-8
21	Johanna Teder	G	13:05	0-1	0-1	1-2	0	1	1	2	1	1	0	3	0	0	0	-4
20	Grace Sarver		02:52	0-0	0-0	0-0	0	0	0	0	0	0	0	1	0	0	0	-4
3	Emma Nankervis		05:03	1-2	0-0	1-1	0	1	1	0	1	3	0	1	0	0	0	-3
13	Shir Levy		03:01	0-0	0-0	0-0	0	0	0	1	0	0	0	0	0	0	0	-1
2	Michaela Jones		01:02	0-0	0-0	0-0	0	0	0	0	0	0	0	0	0	0	0	1
Team							1	0	1					2				
Totals				7-19	2-5	5-8	4	14	18	5	6	21	2	20	3	3	2	-8

Shooting By Period		
1 st FG%	2-10	20.0%
3PT%	0-1	0.0%
FT%	1-2	50%
2 nd FG%	5-9	55.6%
3PT%	2-4	50.0%
FT%	4-6	66.7%
GM FG%	7-19	36.8%
3PT%	2-5	40.0%
FT%	5-8	62.5%

Dead Ball Rebounds: 3, 1

Technical Fouls::NONE

Arizona - 29

NO.	Name	F/C	Min	FG			Rebounds			Fouls		TP	AS	TO	ST	Blocks		+/-
				M-A	M-A	M-A	OR	DR	TOT	PF	FD					BS	BA	
0	Trinity Baptiste	F	17:06	6-7	1-1	0-0	1	2	3	0	0	13	0	1	5	0	0	8
14	Sam Thomas	F	16:33	1-1	0-0	2-2	0	1	1	1	1	4	0	1	0	0	0	10
25	Cate Reese	F	14:10	2-6	0-1	2-2	1	0	1	0	1	6	0	1	2	0	0	13
2	Aari McDonald	G	16:10	2-7	0-3	0-0	0	2	2	1	2	4	5	2	2	0	0	13
23	Bendu Yeany	G	09:10	0-3	0-1	0-0	0	0	0	2	0	0	0	0	0	0	1	9
13	Helena Pueyo		11:39	0-2	0-1	0-0	0	2	2	1	1	0	0	1	2	1	0	-3
32	Lauren Ware		07:16	0-1	0-0	0-0	0	0	0	0	0	0	0	0	0	1	1	-3
1	Shaina Pellington		06:28	1-2	0-0	0-0	0	0	0	0	0	2	0	1	0	0	1	-5
11	Mara Mote		01:28	0-0	0-0	0-0	0	0	0	1	0	0	0	0	0	0	0	-2
Team							0	0	0					0				
Totals				12-29	1-7	4-4	2	7	9	6	5	29	5	7	11	2	3	8

Shooting By Period		
1 st FG%	6-16	37.5%
3PT%	1-6	16.7%
FT%	0-0	0%
2 nd FG%	6-13	46.2%
3PT%	0-1	0.0%
FT%	4-4	100%
GM FG%	12-29	41.4%
3PT%	1-7	14.3%
FT%	4-4	100.0%

Dead Ball Rebounds: 0, 1

Technical Fouls::NONE

	WSU	ARIZ
Biggest lead	0 (1 st 10:00)	14 (2 nd 9:01)
Best Scoring Run	5(2 nd 3:29)	11(1 st 5:43)
Lead Changes	0	
Times Tied	0	
Time with Lead	00:00	18:54

Points from	WSU	ARIZ
Turnovers	7	19
Paint	8	18
Second Chance	4	2
Fast Breaks	5	11
Bench	3	2

	Period by Period Scoring				
	1st	2nd	3rd	4th	TOT
WSU	5	16	5	18	44
ARIZ	13	16	13	18	60



Period 3

Quarter Starters:

ARIZ	0 Baptiste T	2 McDonald A	14 Thomas S	23 Yeane B	25 Reese C
WSU	4 Leger-Walker K	5 Leger-Walker C	15 Motuga U	21 Teder J	55 Murekatete B

Game Time	ARIZ	Score	Diff	WSU
10:00	1 PELLINGTON S substitution out			
10:00	32 WARE L substitution out			
10:00	23 YEANEY B substitution in			
10:00	25 REESE C substitution in			
10:00				2 JONES M substitution out
10:00				21 TEDER J substitution in
09:52	0 BAPTISTE T steal (6)			5 LEGER-WALKER C turnover bad pass (3)
09:47	0 BAPTISTE T 2pt FG fast break from turnover in the paint, layup made (15)	31-21	10	
09:30				5 LEGER-WALKER C 2pt FG outside the paint, jump shot missed
09:26	14 THOMAS S defensive rebound (2)			
09:13	14 THOMAS S turnover lost ball (2)			5 LEGER-WALKER C steal (2)
08:50				15 MOTUGA U 3pt FG from turnover, jump shot missed
08:46				55 MUREKATETE B offensive rebound (9)
08:42				21 TEDER J 3pt FG from turnover second chance, jump shot missed
08:39				offensive rebound (20)
08:31				55 MUREKATETE B 2pt FG from turnover second chance in the paint, jump shot missed
08:29	23 YEANEY B defensive rebound (1)			
07:59	0 BAPTISTE T 2pt FG outside the paint, jump shot missed			
07:58	offensive dead ball rebound (2)			
07:58	turnover shot clock (9)			
07:44				21 TEDER J 2pt FG from turnover outside the paint, step back jump shot missed
07:42				offensive rebound (21)
07:42	2 MCDONALD A foul personal (2 - 1)			21 TEDER J foul drawn (2)
07:42				55 MUREKATETE B 2pt FG from turnover second chance outside the paint, jump shot missed
07:42	14 THOMAS S defensive rebound (3)			
07:42	14 THOMAS S turnover lost ball (3)			55 MUREKATETE B steal (1)
07:34				4 LEGER-WALKER K 3pt FG from turnover, jump shot missed
07:30	25 REESE C defensive rebound (2)			
07:06	25 REESE C 2pt FG in the paint, layup missed			
07:06				55 MUREKATETE B defensive rebound (10)
07:06	0 BAPTISTE T foul personal (1 - 2)			55 MUREKATETE B foul drawn (1)
06:28				55 MUREKATETE B 2pt FG in the paint, layup missed
06:26	23 YEANEY B defensive rebound (2)			
06:26	23 YEANEY B foul drawn (1)			55 MUREKATETE B foul personal (1 - 1)
06:26	23 YEANEY B substitution out			
06:26	13 PUEYO H substitution in			
06:26				55 MUREKATETE B substitution out
06:26				3 NANKERVIS E substitution in
05:57	13 PUEYO H 3pt FG , jump shot missed			



Washington St. at Arizona

03/04/21 Michelob Ultra Arena, Las Vegas, NV
2021 Pac-12 Women's Tournament

Game Time: 3:00 PM

Game Duration: 2:05

Attendance: 41

Officials: Lisa Jones, Charles Gonzalez, Anita Ortega

Game Time	ARIZ	Score	Diff	WSU
05:57	offensive dead ball rebound (3)			
05:57	turnover shot clock (11)			
05:40		31-24	7	21 TEDER J 3pt FG from turnover, jump shot made (4)
05:40				4 LEGER-WALKER K assist (2)
05:24	25 REESE C 2pt FG in the paint, layup made (8)	33-24	9	
05:24	2 MCDONALD A assist (6)			
05:13				5 LEGER-WALKER C 3pt FG , pull up jump shot missed
05:09	13 PUEYO H defensive rebound (3)			
05:04	14 THOMAS S 3pt FG , jump shot made (7)	36-24	12	
05:04	2 MCDONALD A assist (7)			
04:38				5 LEGER-WALKER C 2pt FG in the paint, pull up jump shot missed
04:34	2 MCDONALD A defensive rebound (3)			
04:30	2 MCDONALD A 2pt FG in the paint, layup missed			
04:30	offensive rebound (17)			
04:30	Timeout media			
04:30	2 MCDONALD A substitution out			
04:30	25 REESE C substitution out			
04:30	1 PELLINGTON S substitution in			
04:30	23 YEANEY B substitution in			
04:30				3 NANKERVIS E substitution out
04:30				20 SARVER G substitution in
04:18	14 THOMAS S 3pt FG second chance, jump shot missed			
04:15	0 BAPTISTE T offensive rebound (4)			
04:12	14 THOMAS S 2pt FG second chance in the paint, layup missed			
04:08				20 SARVER G defensive rebound (1)
03:47				4 LEGER-WALKER K 3pt FG , jump shot missed
03:42	13 PUEYO H defensive rebound (4)			
03:30	1 PELLINGTON S 2pt FG in the paint, driving layup made (4)	38-24	14	
03:23	13 PUEYO H steal (3)			4 LEGER-WALKER K turnover bad pass (6)
03:13	1 PELLINGTON S foul drawn (1)			15 MOTUGA U foul shooting (1 - 2)
03:13	1 PELLINGTON S free throw 1 - 2 missed			
03:13	offensive dead ball rebound (4)			
03:13	1 PELLINGTON S free throw 2 - 2 missed			
03:13	23 YEANEY B offensive rebound (3)			
02:59	jump ball situation			
02:57	0 BAPTISTE T 2pt FG in the paint, layup missed			
02:54	0 BAPTISTE T offensive rebound (5)			
02:53	0 BAPTISTE T 2pt FG second chance in the paint, layup made (17)	40-24	16	
02:45	13 PUEYO H steal (4)			4 LEGER-WALKER K turnover lost ball (7)
02:40	1 PELLINGTON S 2pt FG from turnover in the paint, driving layup missed			
02:38	offensive rebound (22)			
02:38	14 THOMAS S substitution out			
02:38	2 MCDONALD A substitution in			
02:38				4 LEGER-WALKER K substitution out
02:38				22 MOLINA C substitution in
02:31	0 BAPTISTE T foul offensive (2 - 3)			22 MOLINA C foul drawn (1)
02:31	0 BAPTISTE T turnover offensive (2)			



Official Basketball Play by Play - 3rd Period

Washington St. at Arizona

03/04/21 Michelob Ultra Arena, Las Vegas, NV
2021 Pac-12 Women's Tournament

Game Time: 3:00 PM

Game Duration: 2:05

Attendance: 41

Officials: Lisa Jones, Charles Gonzalez, Anita Ortega

Game Time	ARIZ	Score	Diff	WSU
02:10				5 LEGER-WALKER C 2pt FG from turnover in the paint, jump shot missed
02:07				offensive rebound (24)
02:07	0 BAPTISTE T substitution out			
02:07	32 WARE L substitution in			
02:05				21 TEDER J 3pt FG from turnover second chance, jump shot missed
02:02	13 PUEYO H defensive rebound (5)			
01:46	2 MCDONALD A 2pt FG in the paint, pull up jump shot missed			
01:43	32 WARE L offensive rebound (1)			
01:42	32 WARE L 2pt FG second chance in the paint, layup missed			
01:42	2 MCDONALD A offensive rebound (4)			
01:42	2 MCDONALD A 2pt FG second chance in the paint, layup made (6)	42-24	18	
01:27				Timeout 30 Sec
01:27	Timeout media			
01:17				5 LEGER-WALKER C 2pt FG in the paint, jump shot missed
01:13	2 MCDONALD A defensive rebound (5)			
01:10	2 MCDONALD A turnover lost ball (3)			20 SARVER G steal (1)
00:53	23 YEANEY B foul shooting (3 - 4)			5 LEGER-WALKER C foul drawn (4)
00:53	23 YEANEY B substitution out			
00:53	14 THOMAS S substitution in			
00:53		42-25	17	5 LEGER-WALKER C free throw 1 - 2 made (7)
00:53		42-26	16	5 LEGER-WALKER C free throw 2 - 2 made (8)
00:36	2 MCDONALD A 3pt FG , jump shot missed			
00:32				defensive rebound (25)
00:06				5 LEGER-WALKER C 3pt FG , jump shot missed
00:01	1 PELLINGTON S defensive rebound (1)			
END OF PERIOD				
ARIZ 42-26 WSU				



Officials: Lisa Jones, Charles Gonzalez, Anita Ortega

Washington St. - 5

NO.	Name	F	Min	FG			Rebounds			Fouls		TP	AS	TO	ST	Blocks		+/-
				M-A	3P	FT	OR	DR	TOT	PF	FD					BS	BA	
15	Ula Motuga	F	10:00	0-1	0-1	0-0	0	0	0	1	0	0	0	0	0	0	0	-8
55	Bella Murekatete	C	03:34	0-3	0-0	0-0	1	1	2	1	1	0	0	0	1	0	0	-2
4	Krystal Leger-Walker	G	07:22	0-2	0-2	0-0	0	0	0	0	0	1	2	0	0	0	-8	
5	Charlissee Leger-Walker	G	10:00	0-6	0-2	2-2	0	0	0	0	1	2	0	1	1	0	-8	
21	Johanna Teder	G	10:00	1-4	1-3	0-0	0	0	0	0	1	3	0	0	0	0	-8	
2	Michaela Jones		00:00	0-0	0-0	0-0	0	0	0	0	0	0	0	0	0	0	0	
3	Emma Nankervis		01:56	0-0	0-0	0-0	0	0	0	0	0	0	0	0	0	0	-2	
20	Grace Sarver		04:30	0-0	0-0	0-0	0	1	1	0	0	0	0	0	1	0	-4	
22	Celena Molina		02:38	0-0	0-0	0-0	0	0	0	0	1	0	0	0	0	0	0	
Team							3	1	4			0		0				
Totals				1-16	1-8	2-2	4	3	7	2	4	5	1	3	3	0	0	-8

Shooting By Period		
3rd FG%	1-16	6.3%
3PT%	1-8	12.5%
FT%	2-2	100%
GM FG%	1-16	6.3%
3PT%	1-8	12.5%
FT%	2-2	100.0%

Dead Ball Rebounds: 0, 0

Technical Fouls::NONE

Arizona - 13

NO.	Name	F	Min	FG			Rebounds			Fouls		TP	AS	TO	ST	Blocks		+/-
				M-A	3P	FT	OR	DR	TOT	PF	FD					BS	BA	
0	Trinity Baptiste	F	07:53	2-4	0-0	0-0	2	0	2	2	0	4	0	1	1	0	0	8
14	Sam Thomas	F	08:16	1-3	1-2	0-0	0	2	2	0	0	3	0	2	0	0	0	6
25	Cate Reese	F	05:30	1-2	0-0	0-0	0	1	1	0	0	2	0	0	0	0	0	4
2	Aari McDonald	G	08:08	1-4	0-1	0-0	1	2	3	1	0	2	2	1	0	0	0	4
23	Bendu Yeane	G	07:10	0-0	0-0	0-0	1	2	3	1	1	0	0	0	0	0	0	8
13	Helena Pueyo		06:26	0-1	0-1	0-0	0	3	3	0	0	0	0	0	2	0	0	6
1	Shaina Pellington		04:30	1-2	0-0	0-2	0	1	1	0	1	2	0	0	0	0	0	4
32	Lauren Ware		02:07	0-1	0-0	0-0	1	0	1	0	0	0	0	0	0	0	0	
Team							2	0	2			0		2				
Totals				6-17	1-4	0-2	7	11	18	4	2	13	2	6	3	0	0	8

Shooting By Period		
3rd FG%	6-17	35.3%
3PT%	1-4	25.0%
FT%	0-2	0%
GM FG%	6-17	35.3%
3PT%	1-4	25.0%
FT%	0-2	0.0%

Dead Ball Rebounds: 3, 0

Technical Fouls::NONE

	WSU	ARIZ
Biggest lead	0 (1 st 10:00)	18 (3 rd 1:42)
Best Scoring Run	3 (3 rd 5:40)	11 (3 rd 1:42)
Lead Changes	0	
Times Tied	0	
Time with Lead	00:00	09:47

Points from	WSU	ARIZ
Turnovers	5	2
Paint	0	10
Second Chance	0	4
Fast Breaks	0	2
Bench	0	2

	Period by Period Scoring				
	1st	2nd	3rd	4th	TOT
WSU	5	16	5	18	44
ARIZ	13	16	13	18	60



Period 4

Quarter Starters:

ARIZ	1 Pellington S	2 McDonald A	13 Pueyo H	14 Thomas S	32 Ware L
WSU	4 Leger-Walker K	5 Leger-Walker C	20 Sarver G	21 Teder J	22 Molina C

Game Time	ARIZ	Score	Diff	WSU
10:00				15 MOTUGA U substitution out
10:00				4 LEGER-WALKER K substitution in
09:53				5 LEGER-WALKER C 2pt FG in the paint, layup blocked
09:53	1 PELLINGTON S block (1)			
09:51	1 PELLINGTON S defensive rebound (2)			
09:51	jump ball situation			
09:36	32 WARE L foul drawn (1)			5 LEGER-WALKER C foul personal (2 - 1)
09:35	2 MCDONALD A 3pt FG , jump shot made (9)	45-26	19	
09:35	32 WARE L assist (1)			
09:16	2 MCDONALD A foul personal (3 - 1)			4 LEGER-WALKER K foul drawn (1)
09:15		45-28	17	20 SARVER G 2pt FG outside the paint, jump shot made (2)
09:15				4 LEGER-WALKER K assist (3)
08:55	32 WARE L turnover travel (1)			
08:52	13 PUEYO H substitution out			
08:52	4 CONNER M substitution in			
08:30		45-31	14	4 LEGER-WALKER K 3pt FG from turnover, jump shot made (8)
08:30				5 LEGER-WALKER C assist (1)
08:10	2 MCDONALD A 3pt FG , jump shot missed			
08:06	offensive rebound (29)			
08:02	32 WARE L 2pt FG second chance in the paint, layup made (2)	47-31	16	
07:34				4 LEGER-WALKER K 3pt FG , jump shot missed
07:34				5 LEGER-WALKER C offensive rebound (3)
07:34	14 THOMAS S foul personal (2 - 2)			5 LEGER-WALKER C foul drawn (5)
07:26	2 MCDONALD A steal (3)			4 LEGER-WALKER K turnover lost ball (8)
07:11	2 MCDONALD A 3pt FG from turnover, pull up jump shot missed			
07:06				21 TEDER J defensive rebound (2)
07:05				21 TEDER J turnover lost ball (4)
07:05	14 THOMAS S foul drawn (2)			21 TEDER J foul personal (3 - 2)
07:03	2 MCDONALD A 2pt FG from turnover in the paint, driving layup made (11)	49-31	18	
06:51		49-34	15	21 TEDER J 3pt FG , jump shot made (7)
06:51				5 LEGER-WALKER C assist (2)
06:37	4 CONNER M 3pt FG , jump shot made (3)	52-34	18	
06:37	14 THOMAS S assist (1)			
06:17				20 SARVER G 3pt FG , jump shot missed
06:11	4 CONNER M defensive rebound (1)			
06:04	32 WARE L 2pt FG in the paint, layup made (4)	54-34	20	
05:52		54-36	18	21 TEDER J 2pt FG in the paint, layup made (9)
05:33	32 WARE L 2pt FG in the paint, layup made (6)	56-36	20	
05:33	2 MCDONALD A assist (8)			
05:14		56-38	18	22 MOLINA C 2pt FG outside the paint, jump shot made (2)
05:14				20 SARVER G assist (1)
04:50	32 WARE L 2pt FG outside the paint, jump shot missed			



Washington St. at Arizona

03/04/21 Michelob Ultra Arena, Las Vegas, NV
2021 Pac-12 Women's Tournament

Officials: Lisa Jones, Charles Gonzalez, Anita Ortega

Game Time	ARIZ	Score	Diff	WSU
04:48				20 SARVER G defensive rebound (2)
04:42				21 TEDER J 2pt FG in the paint, driving layup blocked
04:42	32 WARE L block (2)			
04:42				offensive rebound (29)
04:42	Timeout media			
04:42	2 MCDONALD A substitution out			
04:42	14 THOMAS S substitution out			
04:42	11 MOTE M substitution in			
04:42	13 PUEYO H substitution in			
04:42				20 SARVER G substitution out
04:42				2 JONES M substitution in
04:28				5 LEGER-WALKER C 2pt FG second chance outside the paint, jump shot missed
04:23				22 MOLINA C offensive rebound (1)
04:13				4 LEGER-WALKER K 3pt FG second chance, pull up jump shot missed
04:09				2 JONES M offensive rebound (1)
04:09	jump ball situation			
04:09	32 WARE L substitution out			
04:09	34 SMITH S substitution in			
04:09	11 MOTE M foul personal (2 - 3)			2 JONES M foul drawn (1)
04:01	4 CONNER M foul shooting (1 - 4)			5 LEGER-WALKER C foul drawn (6)
04:01		56-39	17	5 LEGER-WALKER C free throw 1 - 2 made (9)
04:01		56-40	16	5 LEGER-WALKER C free throw 2 - 2 made (10)
03:37	4 CONNER M 3pt FG , jump shot missed			
03:35	34 SMITH S offensive rebound (1)			
03:29	1 PELLINGTON S 2pt FG second chance outside the paint, pull up jump shot missed			
03:25				21 TEDER J defensive rebound (3)
03:23	1 PELLINGTON S foul shooting (1 - 5)			5 LEGER-WALKER C foul drawn (7)
03:23		56-41	15	5 LEGER-WALKER C free throw fast break 1 - 3 made (11)
03:23				5 LEGER-WALKER C free throw fast break 2 - 3 missed
03:23				offensive dead ball rebound (5)
03:23		56-42	14	5 LEGER-WALKER C free throw fast break 3 - 3 made (12)
03:23	1 PELLINGTON S substitution out			
03:23	4 CONNER M substitution out			
03:23	11 MOTE M substitution out			
03:23	13 PUEYO H substitution out			
03:23	34 SMITH S substitution out			
03:23	0 BAPTISTE T substitution in			
03:23	2 MCDONALD A substitution in			
03:23	14 THOMAS S substitution in			
03:23	23 YEANEY B substitution in			
03:23	25 REESE C substitution in			
03:08	0 BAPTISTE T turnover bad pass (3)			21 TEDER J steal (1)
03:03				22 MOLINA C 2pt FG from turnover in the paint, layup missed
02:59	0 BAPTISTE T defensive rebound (6)			
02:37	jump ball situation			
02:35	2 MCDONALD A 2pt FG outside the paint, jump shot missed			
02:33				defensive rebound (33)



Washington St. at Arizona

03/04/21 Michelob Ultra Arena, Las Vegas, NV
2021 Pac-12 Women's Tournament

Officials: Lisa Jones, Charles Gonzalez, Anita Ortega

Game Time	ARIZ	Score	Diff	WSU
02:33				22 MOLINA C substitution out
02:33				13 LEVY S substitution in
02:25				21 TEDER J 3pt FG , jump shot missed
02:23	defensive rebound (33)			
02:23	14 THOMAS S foul drawn (3)			21 TEDER J foul personal (4 - 3)
02:23	0 BAPTISTE T substitution out			
02:23	13 PUEYO H substitution in			
02:23				21 TEDER J substitution out
02:23				20 SARVER G substitution in
02:19	25 REESE C 2pt FG fast break in the paint, layup made (10)	58-42	16	
02:19	2 MCDONALD A assist (9)			
02:10				5 LEGER-WALKER C 2pt FG in the paint, layup blocked
02:10	23 YEANEY B block (1)			
02:04	14 THOMAS S defensive rebound (4)			
02:03	2 MCDONALD A 2pt FG fast break in the paint, layup made (13)	60-42	18	
01:59	2 MCDONALD A substitution out			
01:59	10 ERDOGAN D substitution in			
01:59				Timeout 30 Sec
01:52				4 LEGER-WALKER K 3pt FG , jump shot missed
01:48				2 JONES M offensive rebound (2)
01:40				5 LEGER-WALKER C 3pt FG second chance, step back jump shot missed
01:35	13 PUEYO H defensive rebound (6)			
01:35	13 PUEYO H foul drawn (2)			20 SARVER G foul personal (1 - 4)
01:35	14 THOMAS S substitution out			
01:35	25 REESE C substitution out			
01:35	1 PELLINGTON S substitution in			
01:35	4 CONNER M substitution in			
01:17	1 PELLINGTON S 2pt FG in the paint, jump shot missed			
01:13				4 LEGER-WALKER K defensive rebound (2)
01:10				5 LEGER-WALKER C 2pt FG outside the paint, jump shot missed
01:06				4 LEGER-WALKER K offensive rebound (3)
01:05		60-44	16	4 LEGER-WALKER K 2pt FG second chance in the paint, layup made (10)
01:03				Timeout 60 Sec
01:03				5 LEGER-WALKER C substitution out
01:03				14 CLARKE J substitution in
00:34	1 PELLINGTON S 2pt FG in the paint, jump shot missed			
00:32	1 PELLINGTON S offensive rebound (3)			
00:32	Timeout 30 Sec			
00:28	10 ERDOGAN D turnover bad pass (1)			20 SARVER G steal (2)
00:13	13 PUEYO H steal (5)			14 CLARKE J turnover bad pass (1)
END OF GAME				
ARIZ 60-44 WSU				



Officials: Lisa Jones, Charles Gonzalez, Anita Ortega

Washington St. - 18

NO.	Name	F/C	Min	FG			Rebounds			Fouls		TP	AS	TO	ST	Blocks		+/-
				M-A	M-A	M-A	OR	DR	TOT	PF	FD					BS	BA	
15	Ula Motuga	F	00:00	0-0	0-0	0-0	0	0	0	0	0	0	0	0	0	0	0	0
55	Bella Murekatete	C	00:00	0-0	0-0	0-0	0	0	0	0	0	0	0	0	0	0	0	0
4	Krystal Leger-Walker	G	10:00	2-5	1-4	0-0	1	1	2	0	1	5	1	1	0	0	0	0
5	Charlissee Leger-Walker	G	08:57	0-5	0-1	4-5	1	0	1	1	3	4	2	0	0	0	2	0
21	Johanna Teder	G	07:37	2-4	1-2	0-0	0	2	2	2	0	5	0	1	1	0	1	2
22	Celena Molina		07:27	1-2	0-0	0-0	1	0	1	0	0	2	0	0	0	0	0	2
2	Michaela Jones		04:42	0-0	0-0	0-0	2	0	2	0	1	0	0	0	0	0	0	2
13	Shir Levy		02:33	0-0	0-0	0-0	0	0	0	0	0	0	0	0	0	0	0	-2
20	Grace Sarver		07:41	1-2	0-1	0-0	0	1	1	1	0	2	1	0	1	0	0	-4
14	Jessica Clarke		01:03	0-0	0-0	0-0	0	0	0	0	0	0	0	1	0	0	0	0
Team							1	1	2			0		0				
Totals				6-18	2-8	4-5	6	5	11	4	5	18	4	3	2	0	3	0

Shooting By Period		
4 th FG%	6-18	33.3%
3PT%	2-8	25.0%
FT%	4-5	80%
GM FG%	6-18	33.3%
3PT%	2-8	25.0%
FT%	4-5	80.0%

Dead Ball Rebounds: 1, 0

Technical Fouls::NONE

Arizona - 18

NO.	Name	F/C	Min	FG			Rebounds			Fouls		TP	AS	TO	ST	Blocks		+/-
				M-A	M-A	M-A	OR	DR	TOT	PF	FD					BS	BA	
0	Trinity Baptiste	F	01:00	0-0	0-0	0-0	0	1	1	0	0	0	0	1	0	0	0	0
14	Sam Thomas	F	07:06	0-0	0-0	0-0	0	1	1	1	2	0	1	0	0	0	0	6
25	Cate Reese	F	01:48	1-1	0-0	0-0	0	0	0	0	0	2	0	0	0	0	0	4
2	Aari McDonald	G	06:42	3-6	1-3	0-0	0	0	0	1	0	7	2	0	1	0	0	6
23	Bendu Yeane	G	03:23	0-0	0-0	0-0	0	0	0	0	0	0	0	0	0	1	0	2
32	Lauren Ware		05:51	3-4	0-0	0-0	0	0	0	0	1	6	1	1	0	1	0	2
4	Madison Conner		07:04	1-2	1-2	0-0	0	1	1	1	0	3	0	0	0	0	0	-5
11	Mara Mote		01:19	0-0	0-0	0-0	0	0	0	1	0	0	0	0	0	0	0	-4
13	Helena Pueyo		04:50	0-0	0-0	0-0	0	1	1	0	1	0	0	0	1	0	0	-1
34	Semaj Smith		00:46	0-0	0-0	0-0	1	0	1	0	0	0	0	0	0	0	0	-4
10	Derin Erdogan		01:59	0-0	0-0	0-0	0	0	0	0	0	0	0	1	0	0	0	-2
1	Shaina Pellington		08:12	0-3	0-0	0-0	1	1	2	1	0	0	0	0	0	1	0	-4
Team							1	1	2			0		0				
Totals				8-16	2-5	0-0	3	6	9	5	4	18	4	3	2	3	0	0

Shooting By Period		
4 th FG%	8-16	50.0%
3PT%	2-5	40.0%
FT%	0-0	0%
GM FG%	8-16	50.0%
3PT%	2-5	40.0%
FT%	0-0	0.0%

Dead Ball Rebounds: 0, 0

Technical Fouls::NONE

	WSU	ARIZ
Biggest lead	0 (1 st 10:00)	20 (4 th 6:04)
Best Scoring Run	6(4 th 3:23)	5(4 th 6:04)
Lead Changes	0	
Times Tied	0	
Time with Lead	00:00	09:53

	WSU	ARIZ
Points from		
Turnovers	3	2
Paint	4	12
Second Chance	4	2
Fast Breaks	2	4
Bench	4	9

	Period by Period Scoring				
	1st	2nd	3rd	4th	TOT
WSU	5	16	5	18	44
ARIZ	13	16	13	18	60



Washington St. at Arizona

03/04/21 Michelob Ultra Arena, Las Vegas, NV
2021 Pac-12 Women's Tournament

Game Time: 3:00 PM
Game Duration: 2:05
Attendance: 41

Officials: Lisa Jones, Charles Gonzalez, Anita Ortega

Washington St. - 23

NO.	Name	F	Min	FG			Rebounds			Fouls		TP	AS	TO	ST	Blocks		+/-
				M-A	M-A	M-A	OR	DR	TOT	PF	FD					BS	BA	
15	Ula Motuga	F	10:00	0-1	0-1	0-0	0	0	0	1	0	0	0	0	0	0	0	-8
55	Bella Murekatete	C	03:34	0-3	0-0	0-0	1	1	2	1	1	0	0	0	1	0	0	-2
4	Krystal Leger-Walker	G	17:22	2-7	1-6	0-0	1	1	2	0	1	5	2	3	0	0	0	-8
5	Charlisse Leger-Walker	G	18:57	0-11	0-3	6-7	1	0	1	1	4	6	2	1	1	0	2	-8
21	Johanna Teder	G	17:37	3-8	2-5	0-0	0	2	2	2	1	8	0	1	1	0	1	-6
3	Emma Nankervis		01:56	0-0	0-0	0-0	0	0	0	0	0	0	0	0	0	0	0	-2
20	Grace Sarver		12:11	1-2	0-1	0-0	0	2	2	1	0	2	1	0	2	0	0	-8
22	Celena Molina		10:05	1-2	0-0	0-0	1	0	1	0	1	2	0	0	0	0	0	2
2	Michaela Jones		04:42	0-0	0-0	0-0	2	0	2	0	1	0	0	0	0	0	0	2
13	Shir Levy		02:33	0-0	0-0	0-0	0	0	0	0	0	0	0	0	0	0	0	-2
14	Jessica Clarke		01:03	0-0	0-0	0-0	0	0	0	0	0	0	0	1	0	0	0	0
Team							4	2	6			0		0				
Totals				7-34	3-16	6-7	10	8	18	6	9	23	5	6	5	0	3	-8

Shooting By Period		
3 rd FG%	1-16	6.3%
3PT%	1-8	12.5%
FT%	2-2	100%
4 th FG%	6-18	33.3%
3PT%	2-8	25.0%
FT%	4-5	80%
GM FG%	7-34	20.6%
3PT%	3-16	18.8%
FT%	6-7	85.7%

Dead Ball Rebounds: 1, 0

Technical Fouls::NONE

Arizona - 31

NO.	Name	F	Min	FG			Rebounds			Fouls		TP	AS	TO	ST	Blocks		+/-
				M-A	M-A	M-A	OR	DR	TOT	PF	FD					BS	BA	
0	Trinity Baptiste	F	08:53	2-4	0-0	0-0	2	1	3	2	0	4	0	2	1	0	0	8
14	Sam Thomas	F	15:22	1-3	1-2	0-0	0	3	3	1	2	3	1	2	0	0	0	12
25	Cate Reese	F	07:18	2-3	0-0	0-0	0	1	1	0	0	4	0	0	0	0	0	8
2	Aari McDonald	G	14:50	4-10	1-4	0-0	1	2	3	2	0	9	4	1	1	0	0	10
23	Bendu Yeane	G	10:33	0-0	0-0	0-0	1	2	3	1	1	0	0	0	0	1	0	10
13	Helena Pueyo		11:16	0-1	0-1	0-0	0	4	4	0	1	0	0	0	3	0	0	5
1	Shaina Pellington		12:42	1-5	0-0	0-2	1	2	3	1	1	2	0	0	0	1	0	0
32	Lauren Ware		07:58	3-5	0-0	0-0	1	0	1	0	1	6	1	1	0	1	0	2
4	Madison Conner		07:04	1-2	1-2	0-0	0	1	1	1	0	3	0	0	0	0	0	-5
11	Mara Mote		01:19	0-0	0-0	0-0	0	0	0	1	0	0	0	0	0	0	0	-4
34	Semaj Smith		00:46	0-0	0-0	0-0	1	0	1	0	0	0	0	0	0	0	0	-4
10	Derin Erdogan		01:59	0-0	0-0	0-0	0	0	0	0	0	0	0	1	0	0	0	-2
Team							3	1	4			0		2				
Totals				14-33	3-9	0-2	10	17	27	9	6	31	6	9	5	3	0	8

Shooting By Period		
3 rd FG%	6-17	35.3%
3PT%	1-4	25.0%
FT%	0-2	0%
4 th FG%	8-16	50.0%
3PT%	2-5	40.0%
FT%	0-0	0%
GM FG%	14-33	42.4%
3PT%	3-9	33.3%
FT%	0-2	0.0%

Dead Ball Rebounds: 3, 0

Technical Fouls::NONE

	WSU	ARIZ
Biggest lead	0 (1 st 10:00)	20 (4 th 6:04)
Best Scoring Run	6 (4 th 3:23)	11 (3 rd 1:42)
Lead Changes	0	
Times Tied	0	
Time with Lead	00:00	19:47

	WSU	ARIZ
Points from		
Turnovers	8	4
Paint	4	22
Second Chance	4	6
Fast Breaks	2	6
Bench	4	11

Period by Period Scoring					
	1st	2nd	3rd	4th	TOT
WSU	5	16	5	18	44
ARIZ	13	16	13	18	60



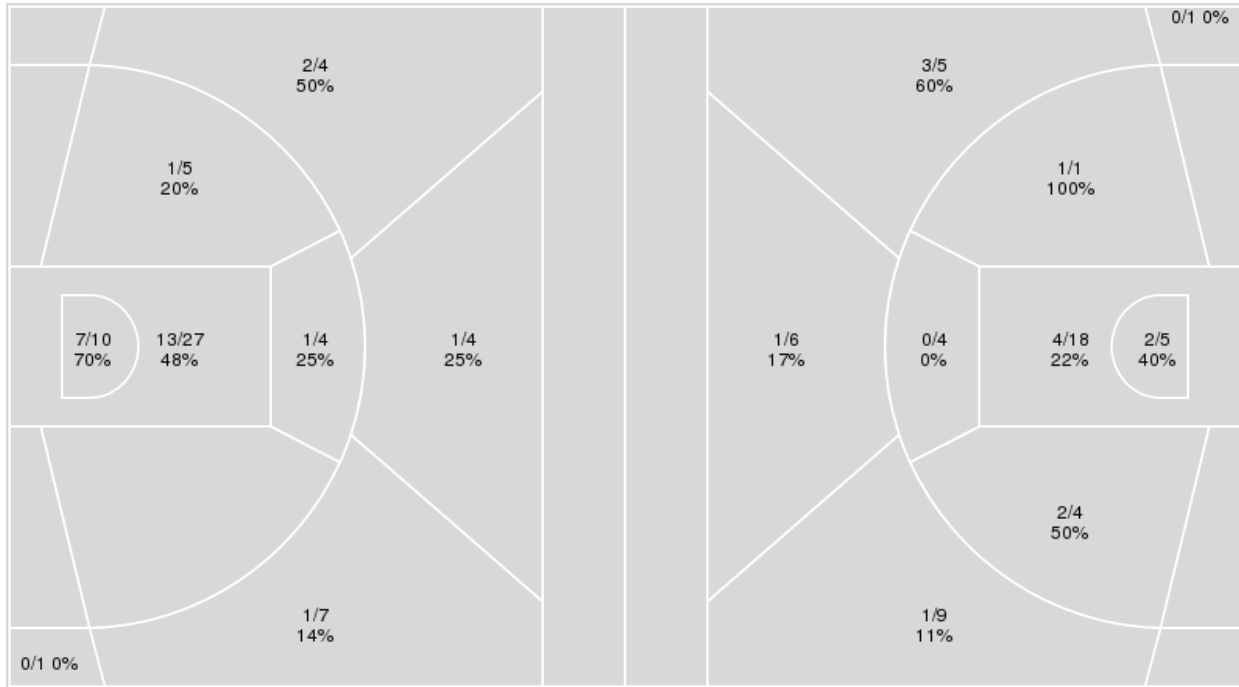
Officials: Lisa Jones, Charles Gonzalez, Anita Ortega

{ Players => All; } FG Types => All; Results => All;

{ Players => All; } FG Types => All; Results => All;

Arizona

Washington St.



Arizona	M/A	%
Field Goals	26/62	42
2 Points	22/46	48
3 Points	4/16	25
Free Throws	4/6	67

Washington St.	M/A	%
Field Goals	14/53	26
2 Points	9/32	28
3 Points	5/21	24
Free Throws	11/15	73



Washington St. at Arizona

03/04/21 Michelob Ultra Arena, Las Vegas, NV
2021 Pac-12 Women's Tournament

Game Time: 3:00 PM
Game Duration: 2:05
Attendance: 41

Officials: Lisa Jones, Charles Gonzalez, Anita Ortega

Washington St.

No	Name	Mins		Score		Points Diff		Points per Min		Assists		Rebounds		Steals		Turnovers	
		On	Off	On	Off	On	Off	On	Off	On	Off	On	Off	On	Off	On	Off
2	Michaela Jones	05:44	34:16	9 - 6	35 - 54	3	-19	1.57	1.02	0	7	7	29	2	6	3	23
3	Emma Nankervis	06:59	33:01	8 - 13	36 - 47	-5	-11	1.15	1.09	2	5	2	34	2	6	4	22
4	Krystal Leger-Walker	37:22	02:38	42 - 58	2 - 2	-16	0	1.12	0.76	7	0	34	2	7	1	26	0
5	Charlissee Leger-Walker	38:57	01:03	44 - 60	0 - 0	-16	0	1.13	0.00	7	0	36	0	7	1	25	1
13	Shir Levy	05:34	34:26	5 - 8	39 - 52	-3	-13	0.90	1.13	1	6	5	31	2	6	3	23
14	Jessica Clarke	01:03	38:57	0 - 0	44 - 60	0	-16	0.00	1.13	0	7	0	36	1	7	1	25
15	Ula Motuga	30:00	10:00	26 - 42	18 - 18	-16	0	0.87	1.80	3	4	25	11	6	2	23	3
20	Grace Sarver	15:03	24:57	18 - 30	26 - 30	-12	-4	1.20	1.04	4	3	10	26	3	5	8	18
21	Johanna Teder	30:42	09:18	34 - 44	10 - 16	-10	-6	1.11	1.08	6	1	31	5	5	3	18	8
22	Celena Molina	10:05	29:55	18 - 16	26 - 44	2	-18	1.79	0.87	4	3	10	26	2	6	2	24
55	Bella Murekatete	18:31	21:29	16 - 23	28 - 37	-7	-9	0.86	1.30	1	6	20	16	3	5	17	9

Arizona

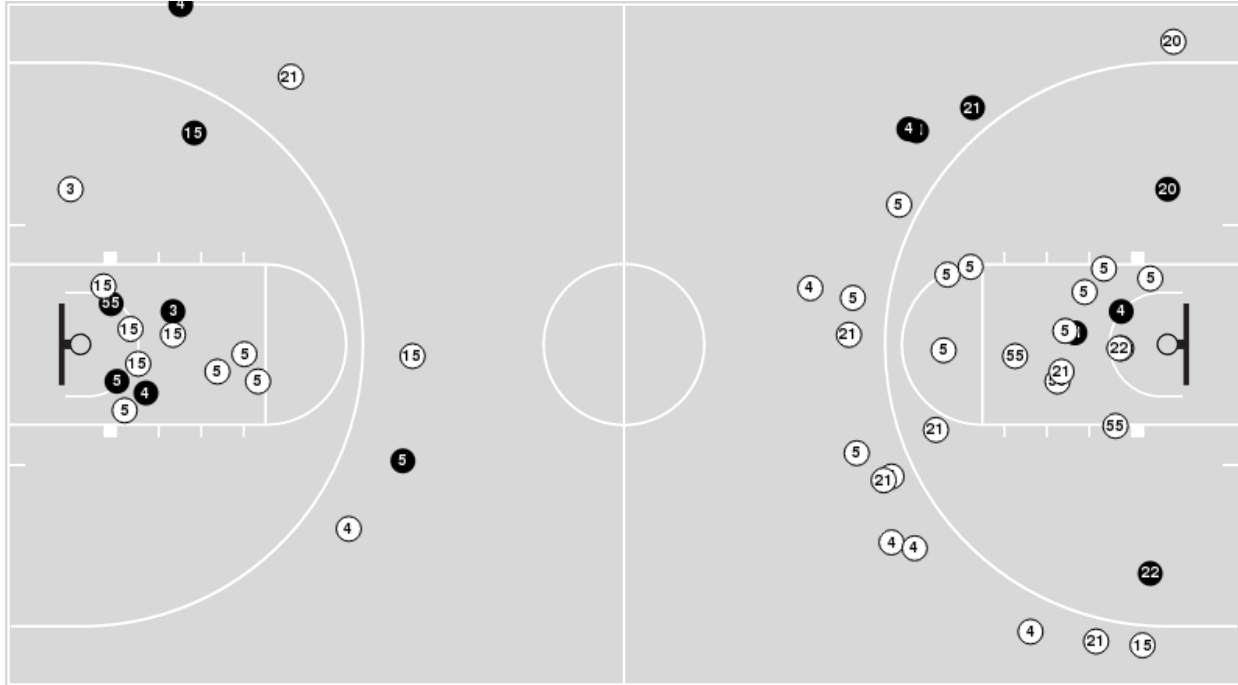
No	Name	Mins		Score		Points Diff		Points per Min		Assists		Rebounds		Steals		Turnovers	
		On	Off	On	Off	On	Off	On	Off	On	Off	On	Off	On	Off	On	Off
0	Trinity Baptiste	25:59	14:01	38 - 22	22 - 22	16	0	1.46	1.57	7	4	23	13	14	2	12	4
1	Shaina Pellington	19:10	20:50	28 - 33	32 - 11	-5	21	1.46	1.54	3	8	16	20	5	11	7	9
2	Aari McDonald	31:00	09:00	52 - 29	8 - 15	23	-7	1.68	0.89	11	0	27	9	13	3	14	2
4	Madison Conner	07:04	32:56	11 - 16	49 - 28	-5	21	1.56	1.49	2	9	4	32	2	14	1	15
10	Derin Erdogan	01:59	38:01	0 - 2	60 - 42	-2	18	0.00	1.58	0	11	2	34	1	15	1	15
11	Mara Mote	02:47	37:13	0 - 6	60 - 38	-6	22	0.00	1.61	0	11	2	34	0	16	1	15
13	Helena Pueyo	22:55	17:05	30 - 28	30 - 16	2	14	1.31	1.76	6	5	24	12	7	9	10	6
14	Sam Thomas	31:55	08:05	58 - 36	2 - 8	22	-6	1.82	0.25	11	0	25	11	14	2	10	6
23	Bendu Yeane	19:43	20:17	25 - 6	35 - 38	19	-3	1.27	1.73	4	7	27	9	11	5	10	6
25	Cate Reese	21:28	18:32	34 - 13	26 - 31	21	-5	1.58	1.40	8	3	20	16	11	5	9	7
32	Lauren Ware	15:14	24:46	24 - 25	36 - 19	-1	17	1.58	1.45	3	8	9	27	2	14	5	11
34	Semaj Smith	00:46	39:14	0 - 4	60 - 40	-4	20	0.00	1.53	0	11	1	35	0	16	0	16



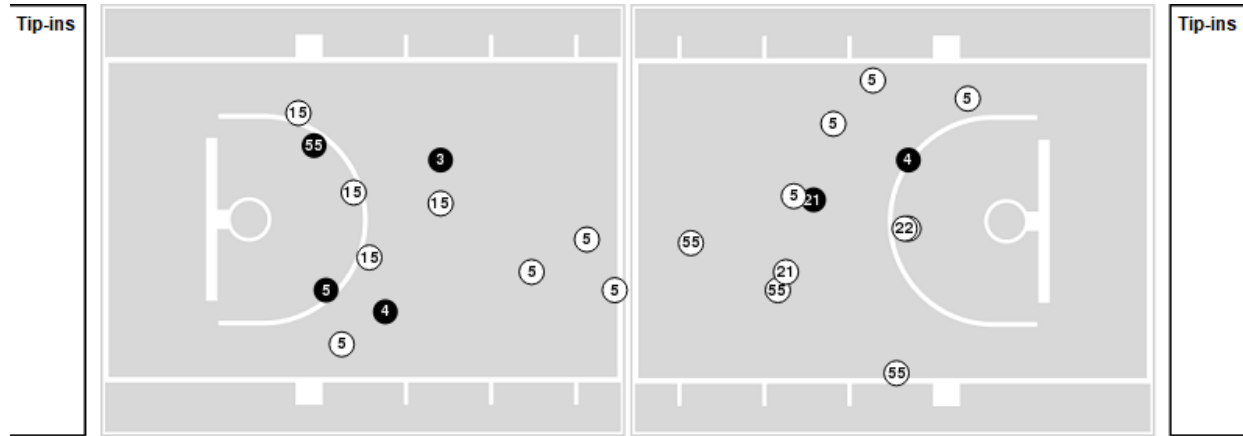
Officials: Lisa Jones, Charles Gonzalez, Anita Ortega

Players => AllFG Types=>AllResults=>All
Washington St.

All Field Goals



Blow Up Chart



● Made ○ Missed N - Player Number

Washington St.	M/A	%
Field Goals	14/53	26
2 Points	9/32	28
3 Points	5/21	24
Free Throws	11/15	73

Washington St.	M/A	%
Points in the Paint	12 (6 / 23)	26
Fast Break Points	7 (4/6)	67
Second Chance Points	8 (6/14)	43
Effective FG%	31	

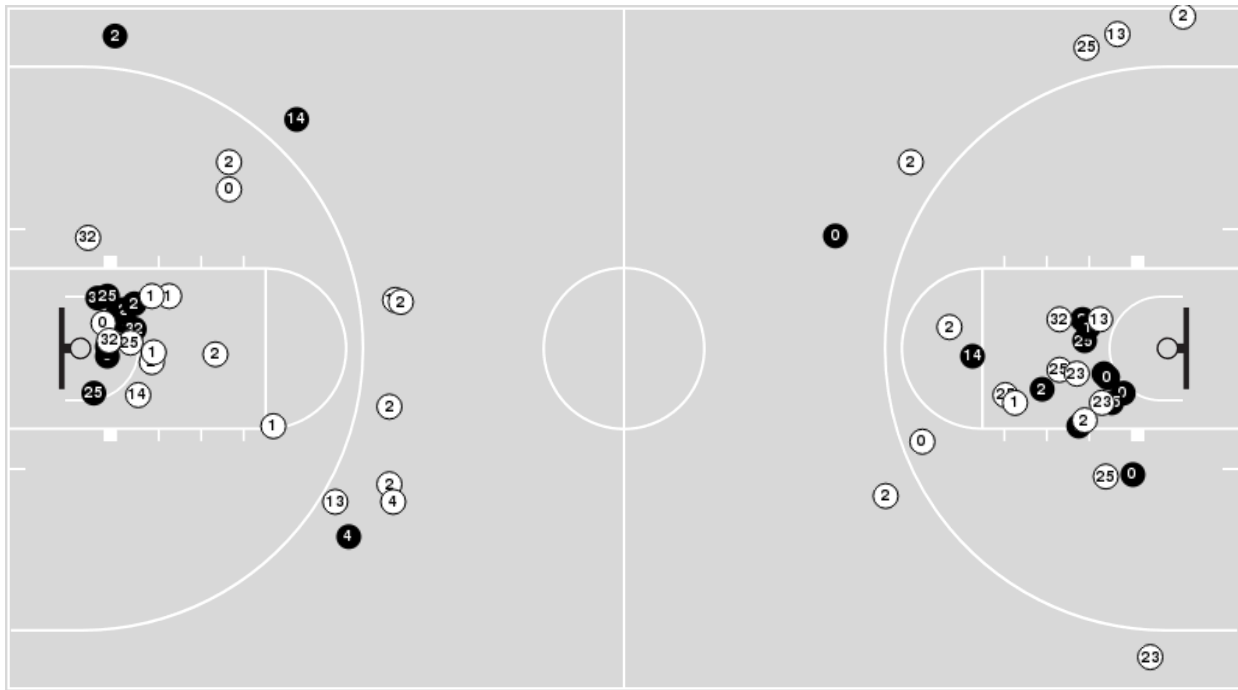


Officials: Lisa Jones, Charles Gonzalez, Anita Ortega

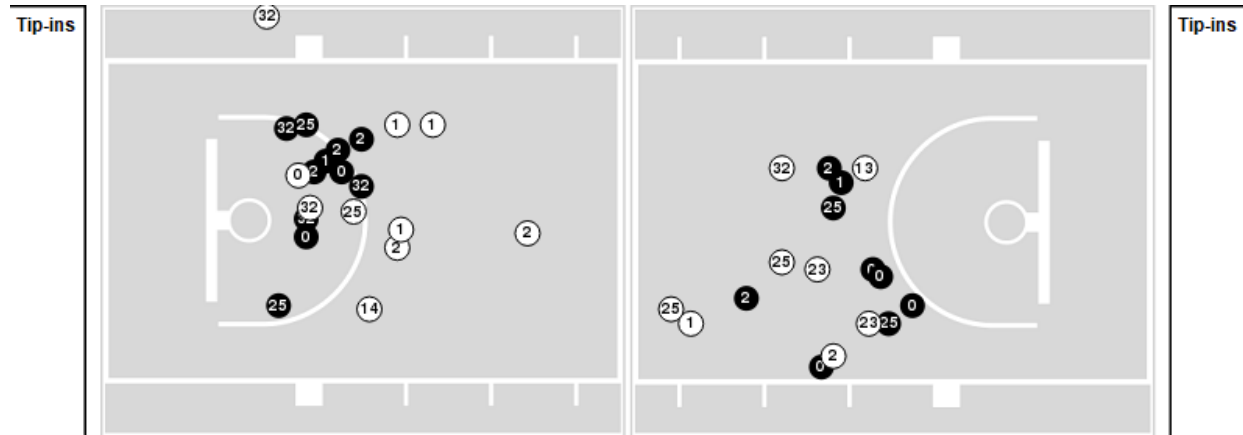
Players => AllFG Types=>AllResults=>All

Arizona

All Field Goals



Blow Up Chart



● Made ○ Missed N - Player Number

Arizona	M/A	%
Field Goals	26/62	42
2 Points	22/46	48
3 Points	4/16	25
Free Throws	4/6	67

Arizona	M/A	%
Points in the Paint	40 (20 / 37)	54
Fast Break Points	17 (9/9)	100
Second Chance Points	8 (4/9)	44
Effective FG%	45	



Washington St. at Arizona

03/04/21 Michelob Ultra Arena, Las Vegas, NV
2021 Pac-12 Women's Tournament

Game Time: 3:00 PM

Game Duration: 2:05

Attendance: 41

Officials: Lisa Jones, Charles Gonzalez, Anita Ortega

Washington St.

Lineup	Quarter On	Time On	Quarter Off	Time Off	Time on Court	Score	Score Diff	Reb	Stl	Tov	Ass	PPP
4- Leger-Walker K/ 5- Leger-Walker C/ 15- Motuga U/ 21- Teder J/ 55- Murekatete B/	1	10:00	1	00:07	09:52	5-13	-8	12	1	11	0	0.2648
4- Leger-Walker K/ 5- Leger-Walker C/ 15- Motuga U/ 20- Sarver G/ 55- Murekatete B/	1	00:07	2	09:18	00:50	0-2	-2	0	0	1	0	0.0000
3- Nankervis E/ 4- Leger-Walker K/ 5- Leger-Walker C/ 15- Motuga U/ 20- Sarver G/	2	09:18	2	07:16	02:02	2-4	-2	0	1	2	0	0.4505
3- Nankervis E/ 4- Leger-Walker K/ 5- Leger-Walker C/ 13- Levy S/ 15- Motuga U/	2	07:16	2	04:15	03:01	3-4	-1	2	1	2	1	0.5515
4- Leger-Walker K/ 5- Leger-Walker C/ 15- Motuga U/ 21- Teder J/ 55- Murekatete B/	2	04:15	2	01:02	03:13	8-4	4	4	0	2	1	1.3889
2- Jones M/ 4- Leger-Walker K/ 5- Leger-Walker C/ 15- Motuga U/ 55- Murekatete B/	2	01:02	3	10:00	01:02	3-2	1	0	0	2	0	1.0000
4- Leger-Walker K/ 5- Leger-Walker C/ 15- Motuga U/ 21- Teder J/ 55- Murekatete B/	3	10:00	3	06:26	03:34	0-2	-2	4	2	1	0	0.0000
3- Nankervis E/ 4- Leger-Walker K/ 5- Leger-Walker C/ 15- Motuga U/ 21- Teder J/	3	06:26	3	04:30	01:56	3-5	-2	0	0	0	1	1.0000
4- Leger-Walker K/ 5- Leger-Walker C/ 15- Motuga U/ 20- Sarver G/ 21- Teder J/	3	04:30	3	02:38	01:52	0-4	-4	1	0	2	0	0.0000
5- Leger-Walker C/ 15- Motuga U/ 20- Sarver G/ 21- Teder J/ 22- Molina C/	3	02:38	4	10:00	02:38	2-2	0	2	1	0	0	0.5155
4- Leger-Walker K/ 5- Leger-Walker C/ 20- Sarver G/ 21- Teder J/ 22- Molina C/	4	10:00	4	04:42	05:18	12-14	-2	4	0	2	4	1.3333
2- Jones M/ 4- Leger-Walker K/ 5- Leger-Walker C/ 21- Teder J/ 22- Molina C/	4	04:42	4	02:33	02:09	4-0	4	4	1	0	0	1.2500
2- Jones M/ 4- Leger-Walker K/ 5- Leger-Walker C/ 13- Levy S/ 21- Teder J/	4	02:33	4	02:23	00:10	0-0	0	0	0	0	0	0.0000
2- Jones M/ 4- Leger-Walker K/ 5- Leger-Walker C/ 13- Levy S/ 20- Sarver G/	4	02:23	4	01:03	01:20	2-4	-2	3	0	0	0	0.6667
2- Jones M/ 4- Leger-Walker K/ 13- Levy S/ 14- Clarke J/ 20- Sarver G/	4	01:03	4	00:00	01:03	0-0	0	0	1	1	0	0.0000



Washington St. at Arizona

03/04/21 Michelob Ultra Arena, Las Vegas, NV
2021 Pac-12 Women's Tournament

Game Time: 3:00 PM
Game Duration: 2:05
Attendance: 41

Officials: Lisa Jones, Charles Gonzalez, Anita Ortega

Arizona

Lineup	Quarter On	Time On	Quarter Off	Time Off	Time on Court	Score	Score Diff	Reb	Stl	Tov	Ass	PPP
0- Baptiste T/ 2- McDonald A/ 14- Thomas S/ 23- Yeane B/ 25- Reese C/	1	10:00	1	05:21	04:39	11-0	11	3	4	0	3	1.3750
0- Baptiste T/ 2- McDonald A/ 13- Pueyo H/ 14- Thomas S/ 32- Ware L/	1	05:21	1	04:28	00:53	0-1	-1	0	0	0	0	0.0000
2- McDonald A/ 13- Pueyo H/ 23- Yeane B/ 25- Reese C/ 32- Ware L/	1	04:28	1	03:47	00:41	0-0	0	0	0	0	0	0.0000
1- Pellington S/ 13- Pueyo H/ 14- Thomas S/ 25- Reese C/ 32- Ware L/	1	03:47	1	03:02	00:45	2-0	2	0	0	0	0	2.0000
1- Pellington S/ 11- Mote M/ 13- Pueyo H/ 14- Thomas S/ 32- Ware L/	1	03:02	1	01:34	01:28	0-2	-2	1	0	1	0	0.0000
0- Baptiste T/ 2- McDonald A/ 13- Pueyo H/ 14- Thomas S/ 25- Reese C/	1	01:34	2	08:57	02:37	6-2	4	0	3	1	2	1.0204
0- Baptiste T/ 2- McDonald A/ 13- Pueyo H/ 23- Yeane B/ 25- Reese C/	2	08:57	2	06:11	02:46	0-2	-2	5	1	3	0	0.0000
0- Baptiste T/ 2- McDonald A/ 14- Thomas S/ 23- Yeane B/ 25- Reese C/	2	06:11	2	05:07	01:04	2-2	0	0	2	0	0	0.6944
0- Baptiste T/ 2- McDonald A/ 13- Pueyo H/ 14- Thomas S/ 25- Reese C/	2	05:07	2	04:15	00:52	2-1	1	0	0	0	0	2.0000
0- Baptiste T/ 1- Pellington S/ 13- Pueyo H/ 14- Thomas S/ 25- Reese C/	2	04:15	2	03:29	00:46	0-3	-3	0	0	0	0	0.0000
0- Baptiste T/ 1- Pellington S/ 13- Pueyo H/ 14- Thomas S/ 32- Ware L/	2	03:29	2	02:38	00:51	2-4	-2	0	0	0	0	1.0000
0- Baptiste T/ 1- Pellington S/ 2- McDonald A/ 14- Thomas S/ 32- Ware L/	2	02:38	3	10:00	02:38	4-4	0	0	1	2	0	0.8000
0- Baptiste T/ 2- McDonald A/ 14- Thomas S/ 23- Yeane B/ 25- Reese C/	3	10:00	3	06:26	03:34	2-0	2	5	1	3	0	0.3333
0- Baptiste T/ 2- McDonald A/ 13- Pueyo H/ 14- Thomas S/ 25- Reese C/	3	06:26	3	04:30	01:56	5-3	2	3	0	1	2	1.2500
0- Baptiste T/ 1- Pellington S/ 13- Pueyo H/ 14- Thomas S/ 23- Yeane B/	3	04:30	3	02:38	01:52	4-0	4	5	2	0	0	1.3889
0- Baptiste T/ 1- Pellington S/ 2- McDonald A/ 13- Pueyo H/ 23- Yeane B/	3	02:38	3	02:07	00:31	0-0	0	0	0	1	0	0.0000
1- Pellington S/ 2- McDonald A/ 13- Pueyo H/ 23- Yeane B/ 32- Ware L/	3	02:07	3	00:53	01:13	2-0	2	4	0	1	0	1.0000
1- Pellington S/ 2- McDonald A/ 13- Pueyo H/ 14- Thomas S/ 32- Ware L/	3	00:53	4	08:52	02:02	3-4	-1	2	0	1	1	1.0000
1- Pellington S/ 2- McDonald A/ 4- Conner M/ 14- Thomas S/ 32- Ware L/	4	08:52	4	04:42	04:10	11-10	1	2	1	0	2	1.5714
1- Pellington S/ 4- Conner M/ 11- Mote M/ 13- Pueyo H/ 32- Ware L/	4	04:42	4	04:09	00:33	0-0	0	0	0	0	0	0.0000
1- Pellington S/ 4- Conner M/ 11- Mote M/ 13- Pueyo H/ 34- Smith S/	4	04:09	4	03:23	00:46	0-4	-4	1	0	0	0	0.0000
0- Baptiste T/ 2- McDonald A/ 14- Thomas S/ 23- Yeane B/ 25- Reese C/	4	03:23	4	02:23	01:00	0-0	0	2	0	1	0	0.0000
2- McDonald A/ 13- Pueyo H/ 14- Thomas S/ 23- Yeane B/ 25- Reese C/	4	02:23	4	01:59	00:24	4-0	4	1	0	0	1	2.0000
10- Erdogan D/ 13- Pueyo H/ 14- Thomas S/ 23- Yeane B/ 25- Reese C/	4	01:59	4	01:35	00:24	0-0	0	1	0	0	0	0.0000
1- Pellington S/ 4- Conner M/ 10- Erdogan D/ 13- Pueyo H/ 23- Yeane B/	4	01:35	4	00:00	01:35	0-2	-2	1	1	1	0	0.0000



Washington St. at Arizona

03/04/21 Michelob Ultra Arena, Las Vegas, NV
2021 Pac-12 Women's Tournament

Game Time: 3:00 PM

Game Duration: 2:05

Attendance: 41

Officials: Lisa Jones, Charles Gonzalez, Anita Ortega

Washington St.

Lineup	Time	Score	Score Diff	Pts/Min	Reb	Stl	Tov	Ass	PPP
4- Leger-Walker K/ 5- Leger-Walker C/ 15- Motuga U/ 21- Teder J/ 55- Murekatete B/	16:39	13-19	-6	0.7808	20	3	14	1	0.4243
4- Leger-Walker K/ 5- Leger-Walker C/ 20- Sarver G/ 21- Teder J/ 22- Molina C/	05:18	12-14	-2	2.2642	4	0	2	4	1.3333
3- Nankervis E/ 4- Leger-Walker K/ 5- Leger-Walker C/ 13- Levy S/ 15- Motuga U/	03:01	3-4	-1	0.9945	2	1	2	1	0.5515
5- Leger-Walker C/ 15- Motuga U/ 20- Sarver G/ 21- Teder J/ 22- Molina C/	02:38	2-2	0	0.7595	2	1	0	0	0.5155
2- Jones M/ 4- Leger-Walker K/ 5- Leger-Walker C/ 21- Teder J/ 22- Molina C/	02:09	4-0	4	1.8605	4	1	0	0	1.2500
3- Nankervis E/ 4- Leger-Walker K/ 5- Leger-Walker C/ 15- Motuga U/ 20- Sarver G/	02:02	2-4	-2	0.9836	0	1	2	0	0.4505
3- Nankervis E/ 4- Leger-Walker K/ 5- Leger-Walker C/ 15- Motuga U/ 21- Teder J/	01:56	3-5	-2	1.5517	0	0	0	1	1.0000
4- Leger-Walker K/ 5- Leger-Walker C/ 15- Motuga U/ 20- Sarver G/ 21- Teder J/	01:52	0-4	-4	0.0000	1	0	2	0	0.0000
2- Jones M/ 4- Leger-Walker K/ 5- Leger-Walker C/ 13- Levy S/ 20- Sarver G/	01:20	2-4	-2	1.5000	3	0	0	0	0.6667
2- Jones M/ 4- Leger-Walker K/ 13- Levy S/ 14- Clarke J/ 20- Sarver G/	01:03	0-0	0	0.0000	0	1	1	0	0.0000
2- Jones M/ 4- Leger-Walker K/ 5- Leger-Walker C/ 15- Motuga U/ 55- Murekatete B/	01:02	3-2	1	2.9032	0	0	2	0	1.0000
4- Leger-Walker K/ 5- Leger-Walker C/ 15- Motuga U/ 20- Sarver G/ 55- Murekatete B/	00:50	0-2	-2	0.0000	0	0	1	0	0.0000
2- Jones M/ 4- Leger-Walker K/ 5- Leger-Walker C/ 13- Levy S/ 21- Teder J/	00:10	0-0	0	0.0000	0	0	0	0	0.0000



Washington St. at Arizona

03/04/21 Michelob Ultra Arena, Las Vegas, NV
2021 Pac-12 Women's Tournament

Game Time: 3:00 PM

Game Duration: 2:05

Attendance: 41

Officials: Lisa Jones, Charles Gonzalez, Anita Ortega

Arizona

Lineup	Time	Score	Score Diff	Pts/Min	Reb	Stl	Tov	Ass	PPP
0- Baptiste T/ 2- McDonald A/ 14- Thomas S/ 23- Yeane B/ 25- Reese C/	10:17	15-2	13	1.4587	10	7	4	3	0.7945
0- Baptiste T/ 2- McDonald A/ 13- Pueyo H/ 14- Thomas S/ 25- Reese C/	05:25	13-6	7	2.4000	3	3	2	4	1.1949
1- Pellington S/ 2- McDonald A/ 4- Conner M/ 14- Thomas S/ 32- Ware L/	04:10	11-10	1	2.6400	2	1	0	2	1.5714
0- Baptiste T/ 2- McDonald A/ 13- Pueyo H/ 23- Yeane B/ 25- Reese C/	02:46	0-2	-2	0.0000	5	1	3	0	0.0000
0- Baptiste T/ 1- Pellington S/ 2- McDonald A/ 14- Thomas S/ 32- Ware L/	02:38	4-4	0	1.5190	0	1	2	0	0.8000
1- Pellington S/ 2- McDonald A/ 13- Pueyo H/ 14- Thomas S/ 32- Ware L/	02:02	3-4	-1	1.4754	2	0	1	1	1.0000
0- Baptiste T/ 1- Pellington S/ 13- Pueyo H/ 14- Thomas S/ 23- Yeane B/	01:52	4-0	4	2.1429	5	2	0	0	1.3889
1- Pellington S/ 4- Conner M/ 10- Erdogan D/ 13- Pueyo H/ 23- Yeane B/	01:35	0-2	-2	0.0000	1	1	1	0	0.0000
1- Pellington S/ 11- Mote M/ 13- Pueyo H/ 14- Thomas S/ 32- Ware L/	01:28	0-2	-2	0.0000	1	0	1	0	0.0000
1- Pellington S/ 2- McDonald A/ 13- Pueyo H/ 23- Yeane B/ 32- Ware L/	01:13	2-0	2	1.6438	4	0	1	0	1.0000
0- Baptiste T/ 2- McDonald A/ 13- Pueyo H/ 14- Thomas S/ 32- Ware L/	00:53	0-1	-1	0.0000	0	0	0	0	0.0000
0- Baptiste T/ 1- Pellington S/ 13- Pueyo H/ 14- Thomas S/ 32- Ware L/	00:51	2-4	-2	2.3529	0	0	0	0	1.0000
0- Baptiste T/ 1- Pellington S/ 13- Pueyo H/ 14- Thomas S/ 25- Reese C/	00:46	0-3	-3	0.0000	0	0	0	0	0.0000
1- Pellington S/ 4- Conner M/ 11- Mote M/ 13- Pueyo H/ 34- Smith S/	00:46	0-4	-4	0.0000	1	0	0	0	0.0000
1- Pellington S/ 13- Pueyo H/ 14- Thomas S/ 25- Reese C/ 32- Ware L/	00:45	2-0	2	2.6667	0	0	0	0	2.0000
2- McDonald A/ 13- Pueyo H/ 23- Yeane B/ 25- Reese C/ 32- Ware L/	00:41	0-0	0	0.0000	0	0	0	0	0.0000
1- Pellington S/ 4- Conner M/ 11- Mote M/ 13- Pueyo H/ 32- Ware L/	00:33	0-0	0	0.0000	0	0	0	0	0.0000
0- Baptiste T/ 1- Pellington S/ 2- McDonald A/ 13- Pueyo H/ 23- Yeane B/	00:31	0-0	0	0.0000	0	0	1	0	0.0000
2- McDonald A/ 13- Pueyo H/ 14- Thomas S/ 23- Yeane B/ 25- Reese C/	00:24	4-0	4	10.0000	1	0	0	1	2.0000
10- Erdogan D/ 13- Pueyo H/ 14- Thomas S/ 23- Yeane B/ 25- Reese C/	00:24	0-0	0	0.0000	1	0	0	0	0.0000